

# EKPV

## Multifunctional Display



### Panel-mounted and portable at the same time!

Even when cockpit-installed, it is always possible to remove the EKPV from the plane to use it with the internal rechargeable battery for updates, flight planning or training school debriefing.



### Light and compact

A brilliant 7" display, with removable battery and built-in GPS receiver, with a weight of just 14.1 Oz (400 g), covering an area of only 4.3" x 6.8" and only 0,8" thick!

### Much more than a moving map: navigation, EFB and PFD

All you need in a single device, developed with safety in mind.

Moreover, through the Cockpit Docking Station, EKPV can connect to: AvMap A2 ADAHRS, autopilot, weather receiver, CAS, video camera and other instruments.

### Horizontal or vertical? Fully customizable!

You can choose the Horizontal or Vertical orientation and you can change the layout choosing what to see and where to display it. You can set different aircraft profiles and even configure the F1 hard key.

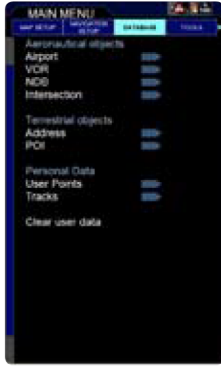
# AvMap EKP V Multifunctional Display

## Features overview

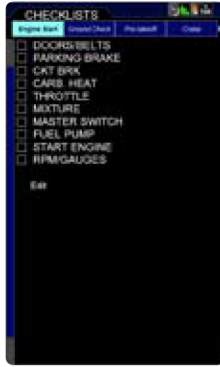
### Planning



GO TO smart menu



Search in the Jeppesen database for Airports, VOR, NDB, INT, VFR rep. points



Editable Checklist



Flight Plan Vertical Profile (Plan up to 50 FP)

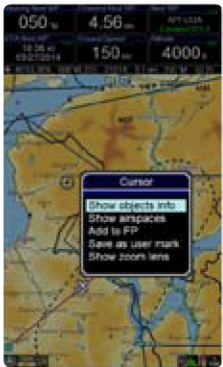


Search and Rescue Patterns



Search for a street address

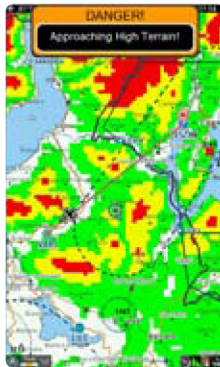
### Maps



Interactive maps



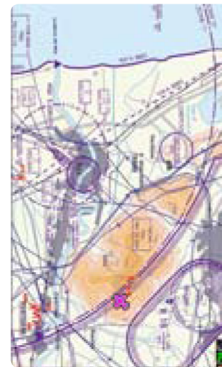
Select which data to display at every map scale



TAWS and obstacles



Airport Diagrams



Approach plates

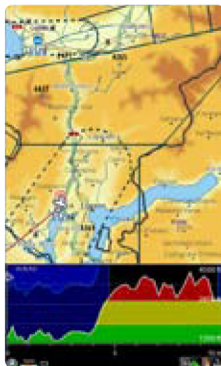


Custom charts import

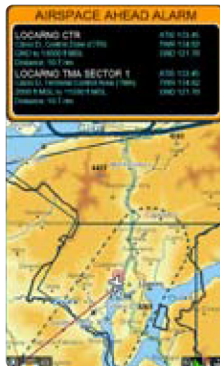
### Navigation



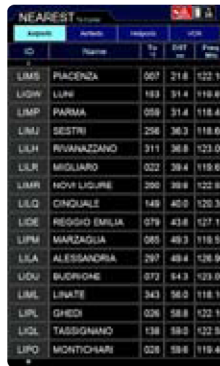
HSI



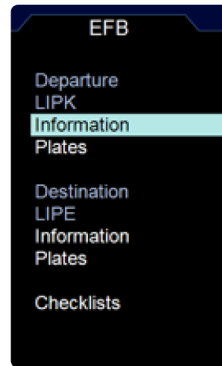
Vertical profile on map



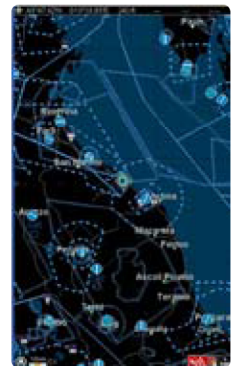
Airspace alarms



NEAREST: search for the nearest airport



Electronic Flight Bag



Night vision

### Connection to external instruments



PFD / EFIS



Collision Avoidance system



Videocamera



Weather (only in North America)

# AvMap EKP V Multifunctional Display



## Moving map excellence: the most detailed maps, with the most reliable official data.

AvMap maps are the result of 30 years of navigation technology and vector maps know-how. Our aeronautical maps include: Land elevation, Jeppesen database, Avioportolano, HERE Street Network, Airport Diagrams and Approach Plates.

Five available coverages: Europe- Africa, North America, South America, Asia-Australia, Worldwide.



### Easy to read maps

Following a visual approach procedure is very easy: select an airport as destination, open its geo-referenced approach plate and watch your plane icon moving on it.

### Customize your map

Build three custom map views choosing the data you need most, and switch from one view to another with a click of the Cycle button.

### Import your maps

Besides using the incredible set of preloaded maps, you can add your own charts! The AvMap Suite helps you converting and importing charts to your EKP V.

# AvMap EKP V Multifunctional Display

## Easy updates with AvMap Suite



Connect EKP V to the PC / MAC and use the AvMap Suite free application to:

- Update EKP V software for free
- Update EKP V maps
- Import flight plans, user points and tracks
- Import custom raster maps.

EKP V is a product in continuous evolution thanks to free software updates; remember to connect your EKP V to the AvMap suite periodically to keep it up-to-date!

## Compatible with web services

AvMap Software provides advanced planning functions, moreover, you can use the most popular flight planning services: you can import flight plans from RocketRoute , iFlightPlanner and Google Earth.

## Instruments and accessories

Find out all the instruments and accessories you can connect to EKP V to complete your AvMap integrated avionic system on [www.avmap.it](http://www.avmap.it) !



## EKP V

### Hardware:

- Dimensions: 110mm x 172mm x 21mm (4.3" x 6.8" x 0.8")
- Weight: 400 g (14.1 Oz)
- Display: 7" (16:9) 4.75" x 7" x 1.5" Color LCD TFT
- Resolution: 800 x 480 pixels
- Built-in high sensitivity GPS receiver
- Micro SD preloaded with software and maps

- Power supply: external 10/35 V DC with cable adapter
- Battery: lithium-Ion, removable, rechargeable
- Consumption: max 10 Watt
- Speaker
- USB OTG master / slave
- Temperature range: -20+60° operative / -30°80° storage

\* Function available in North America

AvMap devices are not IFR certified and are intended for VFR navigation only. Images are for illustrative purpose only. Aspect may vary without notice.

## Cockpit Docking Station



Panel mount EKP V with the Cockpit Docking Station, the hub of all electrical connections of your integrated avionic system.

### Features

- N. 2 serial ports (1 x RS-232, 1 x TTL levels)
- N. 4 USB 2.0 (1 x powered by EKP V internal battery)
- Video input - Video composite signal PAL or NTSC
- Audio input and output
- Socket vibration proof for power supply AVG 16
- Aeronautical grade wires
- Temperature Range -20 + 70 °C / -4°F to +158°F
- High sensitivity external GPS Receiver
- Power supply 10 - 35 VDC (28W max)



### Contact us:

#### Headquarters:

AvMap S.r.l.  
Viale Zaccagna 6  
54033 Carrara (MS) ITALY  
info@avmap.it



[www.facebook.com/AvMap.it](http://www.facebook.com/AvMap.it)  
[www.facebook.com/AvMap.us](http://www.facebook.com/AvMap.us)  
[www.facebook.com/AvMap.br](http://www.facebook.com/AvMap.br)

#### North America:

AvMap Navigation  
29 Simpson Lane, Unit 3  
Falmouth MA 02540, USA  
info@avmap.us

#### South America:

AvMap do Brasil Ltda.  
Rua Professor Getúlio Nogueira de Sá, 51  
CEP: 13208-180 Jundiá, São Paulo, SP, Brazil  
info@avmap.com.br